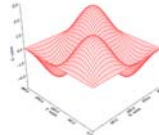
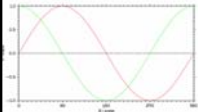




a high-level plotting library  
for displaying data

[www.dislin.de](http://www.dislin.de)



## What is Dislin?

Dislin is a high-level plotting library for displaying data as curves, bar graphs, pie charts, 3D-colour plots, surfaces, contours and maps.

Dislin has been developed by Helmut Michels from Max Planck Institute for Solar System Research, Lindau, Germany.



Max Planck Institute for  
Solar System Research



## Dislin distributions

**Operating systems:** Windows 9x/NT/2000/XP, MS-DOS, Linux, UNIX, VMS, Mac OSX (&more)

**Programming Languages:** Fortran 77, Fortran 90, C, Perl, Python, Java

Current Version: 9.1 (Nov. 2006)

First Version: 1.0 (Dec. 1986)

You need to select a right distribution for your system and compiler

## Formats and output

Vector formats: GKSLIN, CGM, PS, EPS, PDF, HPGL, WMF, SVG

Image formats: TIFF, GIF, PNG, PPM, BMP

Screen output: CONS, XWIN

# Installation

Install Dislin for Windows XP  
Compiler Dev C++

## 1. Download right distributions

For working with Dev C++ for Windows you need to download a distribution

[dl\\_91\\_mg.zip](#) for GCC, G77, G95 (Mingw)

Last version – 4985 KB ( February 1, 2007)

<http://www.mps.mpg.de/dislin/windows.html>

## 2. Install Dislin

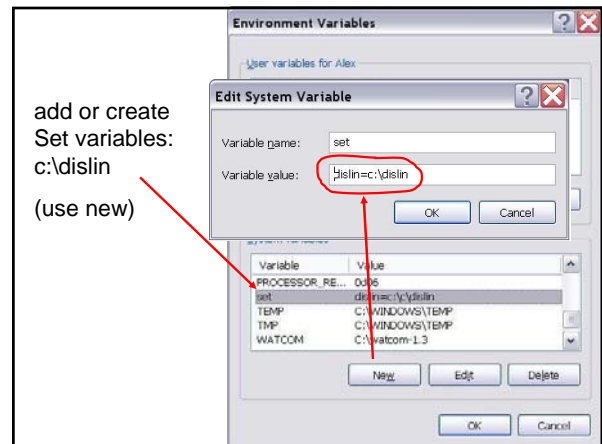
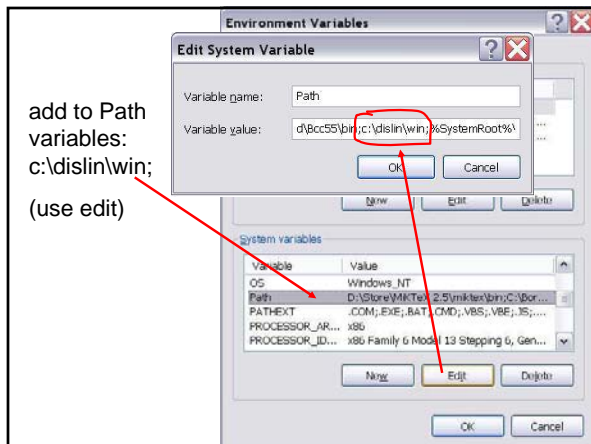
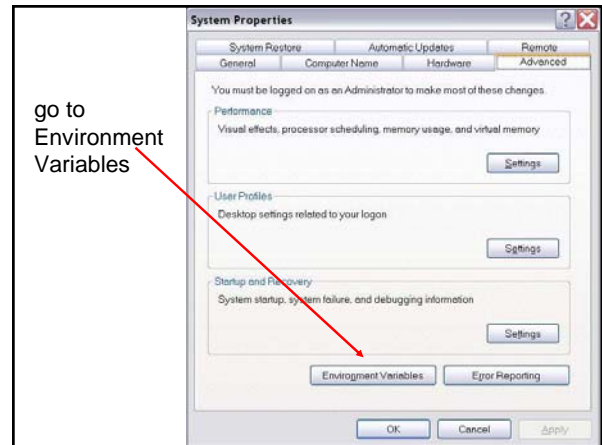
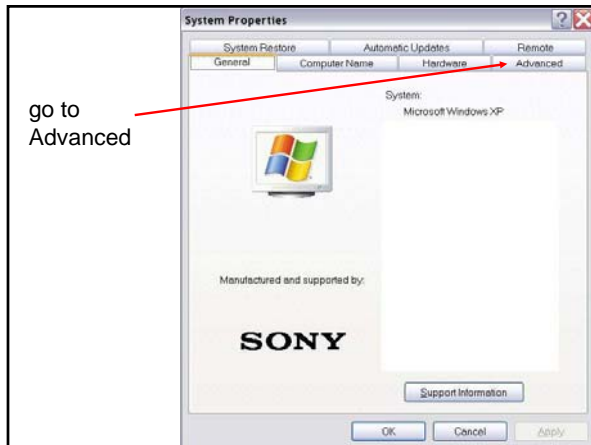
1. Unzip the file `dl_91_mg.zip`
2. Run the setup program (install Dislin in `c:\dislin`).

If you have installed Dislin in a different directory, you have to use that directory for the environment variables later.

## 3. Windows XP

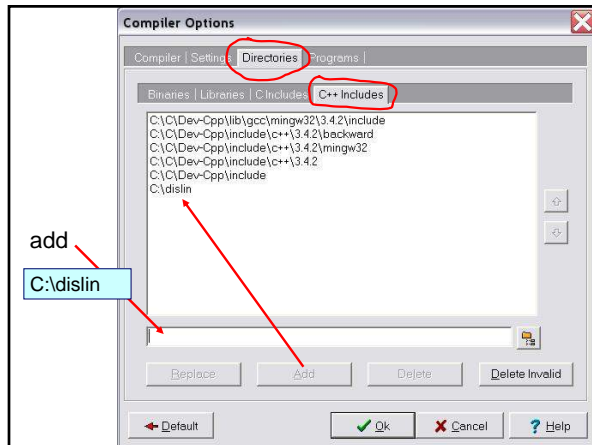
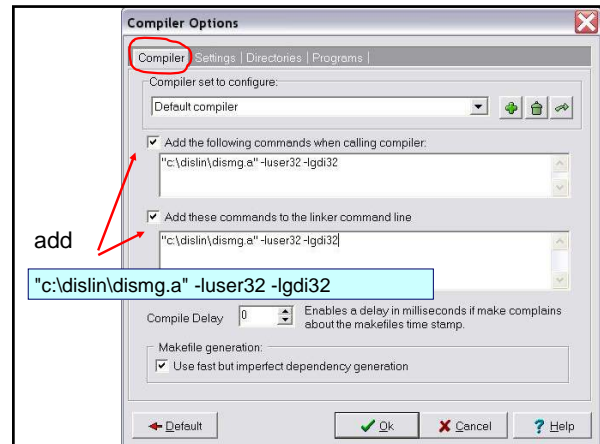
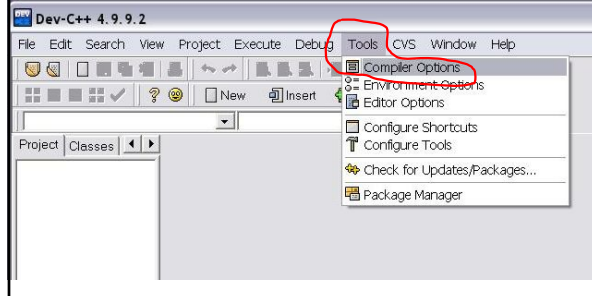
Set the Dislin environment variable

1. Go to "Control Panel"
2. Go to "System"  
(under performance and maintenance)



## 4. Dev C++

Open Dev C++ and go to Tools – Compiler options



### 4a. Dislin directory

You may need to edit file mglink.bat in C:\dislin\win folder

in the line after :COMP you better have "cpp"

```
:COMP
@set _ext=cpp
@set _inc=%_dislin%
```

### double and float precision

the instructions above were for "float", i.e

```
"c:\dislin\dismg.a" -luser32 -lgdi32
```

for "double" use

```
"c:\dislin\dismg_d.a" -luser32 -lgdi32
```

The header file in C++ programs for float is

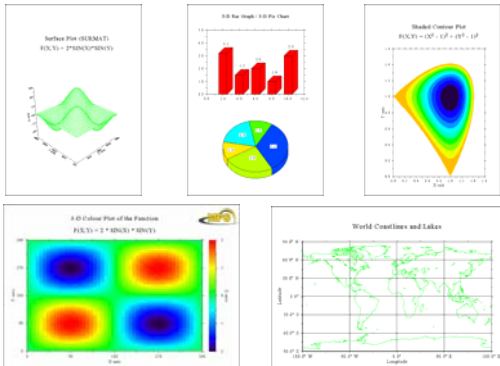
dislin.h

and for double is

dislin\_d.h

## Examples

## Dislin web site has many examples



## A couple examples for Physics 420

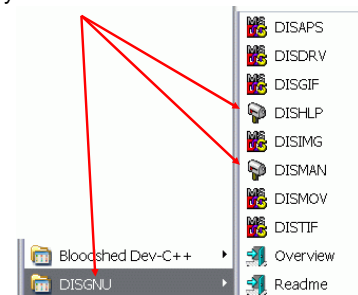
see online under news to Physics 420 (spring 2007)

## Documentation

see [www.dislin.de](http://www.dislin.de) + help

## Help documentation

after installation you have



## Manual from [www.dislin.de](http://www.dislin.de)

An extensive manual [dislin-9.1.pdf](#): 307 pages

### DISLIN 9.1

A Data Plotting

Library

by

Helmut Michels

## Power point from Helmut Michels

